

IDS-5612

Industrial security 1-port RS232/422/485 to 2-port 10/100TX Device Server

Highlights

- Data Security : SSL encryption
- Internet Community : PPPoE
- Update DNS Hostname : DDNS
- Command Port command support
- Redundant Dual Ethernet Ports : Recovery time < 10ms
- Switch Mode Supported: Daisy Chain support to reduce usage of switch ports
- NAT-pass through : User can manage IDS-5612 through NAT router
- Redundant Power Inputs: 12~48VDC on power jack and terminal block
- Redundant multiple host devices : 5 simultaneous in Virtual COM, TCP Server, TCP Client mode, UDP
- Secured Management by HTTPS and SSH
- Versatile Modes : Virtual Com, Serial Tunnel, TCP Server, TCP Client, UDP
- In order to transfer data securely. We support the encryption in TCP server, TCP client mode.
- Connect to internet : pppoe dial and ddns mode.
- Event Warning by Syslog, Email, SNMP trap, and Beeper
- Various Windows O.S. supported: Windows NT/2000/ XP/ 2003/ VISTA 32 bits



Features

- Dual redundant Ethernet port support redundant mode (Recovery time < 10ms)
- Ethernet switch mode enable Daisy Chain
- Redundant 5 multiple host devices supported to protect your industrial network
- Versatile modes & event alarm by e-mail
- HTTPs & SSH protocol supported for secured management
- NAT router pass through
- Console command control
- SSL encryption for Security data transfer
- PPPoE for internet community
- DDNS for domain name service
- IP table to prevent access from unauthorized IP address
- Configurable by Web-based and Windows utility (DS-Tool)
- Dual redundant DC power inputs of terminal block and power jack
- Rigid IP-30 housing design
- DIN-Rail and panel mounting enabled

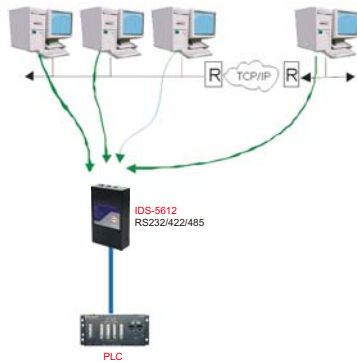
Introduction

IDS-5612 is an innovative 1 port RS232/422/485 to 2 ports LAN redundant security device server. To assure the agility and security of critical data, IDS-5612 offers many powerful features for HW & SW redundant functions. When the connection between master-link and LAN fails, IDS-5612 can automatically switch to another LAN port within 10mS, and still guarantees a non-stop connection. IDS-5612 also supports switch mode, users can use Daisy Chain to reduce the usage of Ethernet switch ports. Secondly, IDS-5612 can simultaneously transfer SSL encryption data into 5 host PCs. This feature can assure all critical data that saved in different host PC to avoid Ethernet break or host PCs failure. Thirdly, IDS-5612 provides dual

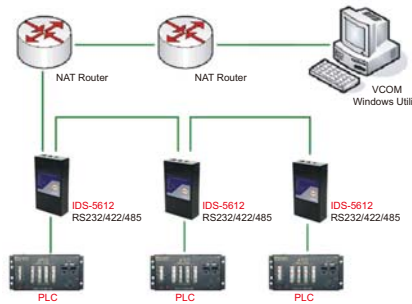
redundant power inputs on DC power jack and terminal block. IDS-5612 also provides NAT pass through function so that users are able to manage IDS-5612 inside or outside the NAT router. It is easy for different IP domain users to use IDS-5612. Therefore, IDS-5612 is one of the best security communication redundant solutions for application of serial devices

DS-Tool

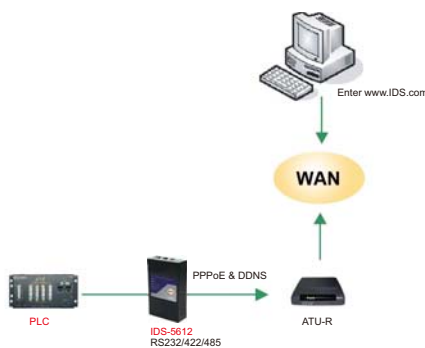
In practical operation of serial device servers, Windows utility (DS-Tool) is supported. This utility is very helpful for you to manage and monitor all of industrial device servers on the industrial network.



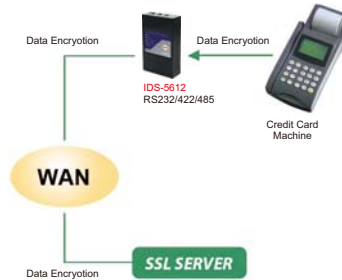
Redundancy 5 Host Devices



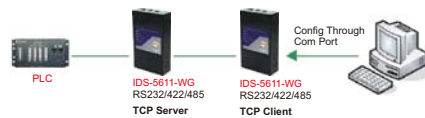
NAT Router Pass Through



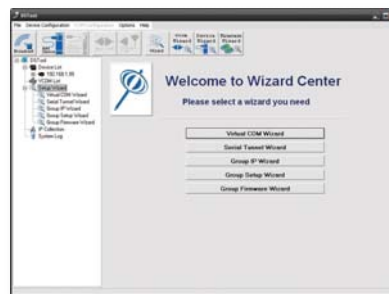
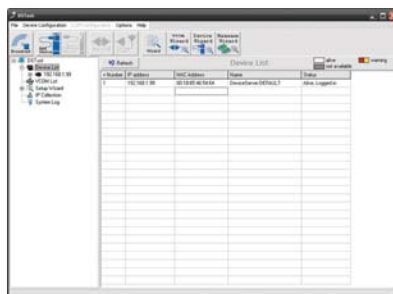
Connect through PPPoE / DDNS



SSL Data Encryption



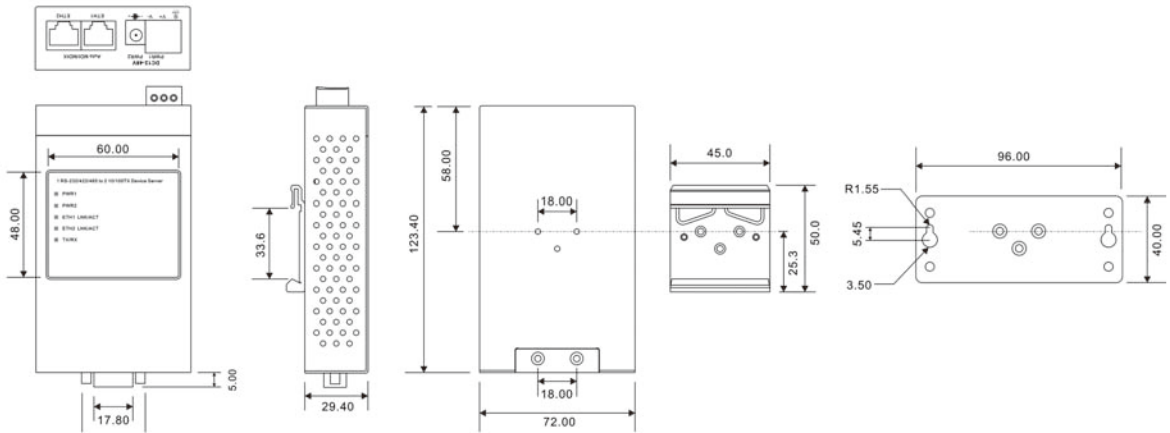
COM Port Command



Monitoring and Configuration interface

Dimension

(Unit=mm)



Specifications

ORing Device Server Model	IDS-5612
Physical Ports	
10/100 Base-T(X) Ports in RJ45 Auto MDI/MDIX	2
Serial Ports	
Connector	DB9 x 1
Operation Mode	RS232 / RS422 / 4(2)-Wire RS485. Which can be configured by DS-Tool
Serial Baud Rate	110 bps to 460.8 Kbps
Data Bits	5, 6, 7, 8
Parity	odd, even, none, mark, space
Stop Bits	1, 1.5, 2
RS-232	TxD, RxD, RTS, CTS, DTR, DSR, DCD, RI, GND
RS-422	Tx+,Tx-, Rx+, Rx-,GND
RS-485 (4-wire)	Tx+,Tx-, Rx+, Rx-,GND
RS-485 (2-wire)	Data+, Data-,GND
Flow Control	XON/XOFF, RTS/CTS, DTR/DSR
LED indicators	
Power indicator	PWR 1(2) / Ready: Red On: Power is on and booting up. Red Blinking: Indicates an IP conflict, or DHCP or BOOTP server did not respond properly. Green On: Power is on and functioning Normally. Green Blinking: Located by Administrator.
10/100TX RJ45 port indicator	Green for port Link/Act at 100Mbps. Yellow for port Link/Act at 10Mbps.
Serial TX / RX LEDs:	Red: Serial port is receiving data Green: Serial port is transmitting data
Power	
Redundant Input power	Dual DC inputs. 12-48VDC on 3-pin terminal block and power jack
Power consumption (Typ.)	4 Watts
Overload current protection	Present
Reverse polarity protection	Present on terminal block

Physical Characteristic	
Enclosure	IP-30
Dimension (W x D x H)	72(W)x100(D)x31(H) mm (2.83x3.94x1.22 inch.)
Weight (g)	327 g
Environmental	
Storage Temperature	-40 to 85°C (-40 to 185°F)
Operating Temperature	-10 to 60°C (14 to 140°F)
Operating Humidity	5% to 95% Non-condensing
Regulatory approvals	
EMI	FCC Part 15, CISPR (EN55022) class A
EMS	EN61000-4-2 (ESD), EN61000-4-3 (RS), EN61000-4-4 (EFT), EN61000-4-5 (Surge), EN61000-4-6 (CS), EN61000-4-8, EN61000-4-11
Shock	IEC60068-2-27
Free Fall	IEC60068-2-32
Vibration	IEC60068-2-6
Safety	EN60950
Warranty	5 years

Ordering Information

IDS-56 **A** **B**

Code Definition	Serial Port Number	Ethernet Port Number
Option	- 1: 1 ports	- 2: 2 ports

Available Model	Model Name	Description
	IDS-5612	Industrial security 1-port RS232/422/485 to 2-port LAN Device Server