

IDS-5642

Industrial security 4-port RS232/422/485 to 2-port 10/100TX Device Server

Highlights

- Data Security: SSL encryption
- Internet Community: PPPoE
- Update DNS Hostname: DDNS
- Comport command support
- Redundant Dual Ethernet Ports: Recovery time < 10ms
- Switch Mode Supported: Daisy Chain support to reduce usage of switch ports
- NAT-pass through: User can manage IDS-5642 through NAT router
- Redundant Power Inputs: 12~48VDC on terminal block
- Redundant multiple host devices: 5 simultaneous in Virtual COM, TCP Server, TCP Client mode, UDP
- Secured Management by HTTPS and SSH
- Versatile Modes: Virtual Com, Serial Tunnel, TCP Server, TCP Client, UDP
- Event Warning by Syslog, Email, SNMP trap, and Beeper
- Various Windows O.S. supported: Windows NT/2000/ XP/ 2003/ VISTA 32bits



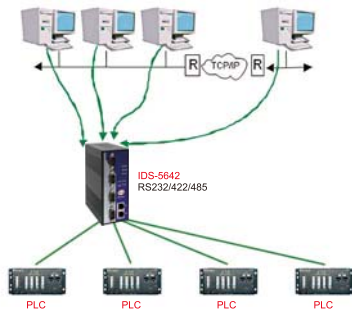
Features

- Dual redundant Ethernet port support redundant mode (Recovery time < 10ms)
- Ethernet switch mode enable Daisy Chain
- Redundant 5 multiple host devices supported to protect your industrial network
- Versatile modes & event alarm by e-mail
- HTTPs & SSH protocol supported for secured management
- NAT router pass through
- Console command control
- SSL encryption for Security data transfer
- PPPoE for internet community
- DDNS for domain name service
- IP table to prevent access from unauthorized IP address
- Configurable by Web-based and Windows utility (DS-Tool)
- 1KV isolation for PoE PD port of IDS-5642+
- Dual redundant DC power inputs of terminal block
- Rigid IP-30 housing design
- DIN-Rail and panel mounting enabled

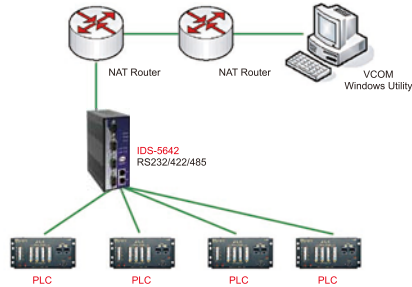
Introduction

IDS-5642 is an innovative 4 port RS232/422/485 to 2 ports LAN redundant security device server. To assure the agility and security of critical data, IDS-5642 offers many powerful features for HW & SW redundant functions. When the connection between master-link and LAN fails, IDS-5642 can automatically switch to another LAN port within 10ms, and still guarantees a non-stop connection. IDS-5642 also supports switch mode, users can use Daisy Chain to reduce the usage of Ethernet switch ports. Secondly, IDS-5642 can simultaneously transfer SSL encryption data into 5 host PCs. This feature can assure all critical data that saved in different host PC to avoid Ethernet break or host PCs failure. Thirdly, IDS-5642 provides dual redundant power inputs on DC power jack and terminal block. IDS-5642 also provides NAT pass through function so that users are able to manage IDS-5642 inside or outside the NAT router. It is easy for different IP domain users to use IDS-5642. In addition, IDS-5642+ also support P.O.E. PD on ETH2. This feature is fully compliant with IEEE802.3af standard. Therefore, IDS-5642 is one of the best security communication redundant solutions for application of serial devices.

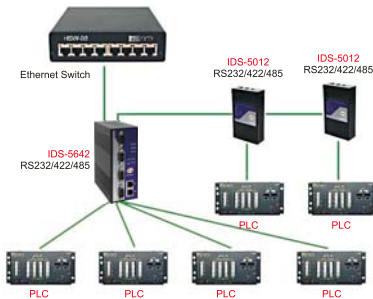
In practical operation of serial device servers, Windows utility (DS-Tool) is supported. This utility is very helpful for you to manage and monitor all of industrial device servers on the industrial network.



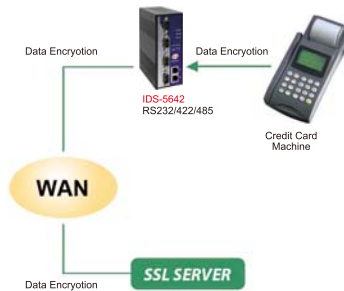
Redundancy 5 Host Devices



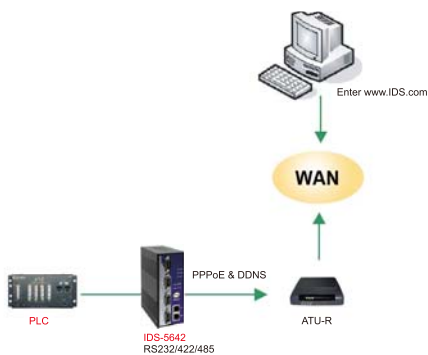
NAT Router Pass Through



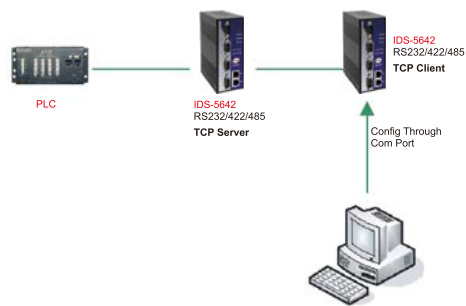
Daisy Chain Switch mode



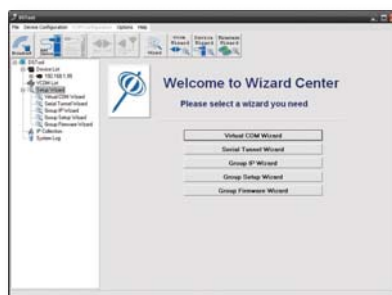
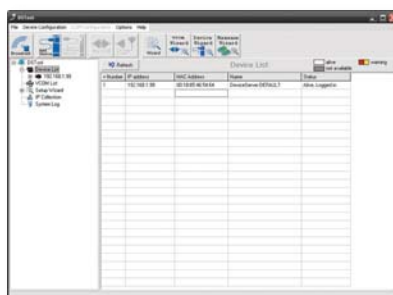
SSL Data Encryption



Connect through PPPoE / DDNS



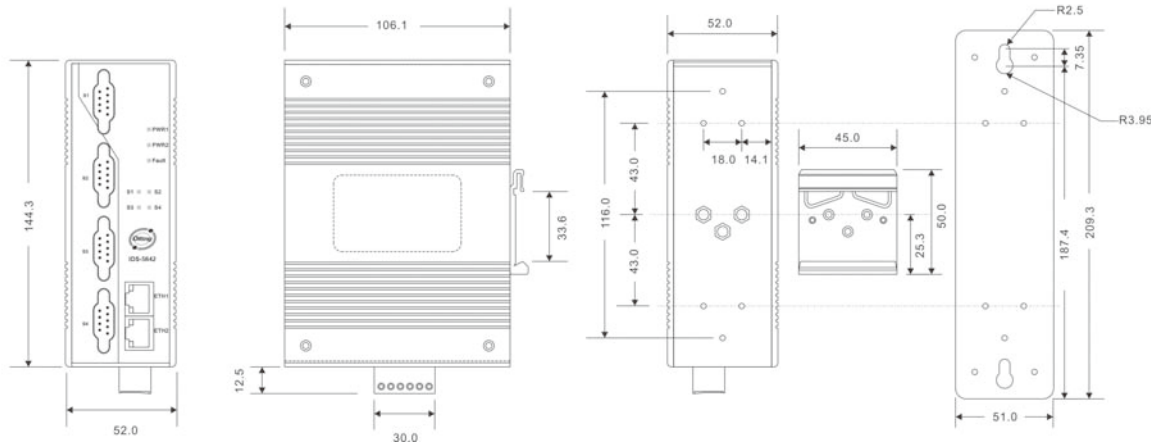
COM Port Command



Monitoring and Configuration interface

Dimension

(Unit=mm)



Specifications

ORing Device Server Model	IDS-5642	IDS-5642+
Physical Ports		
10/100 Base-T(X) Ports in RJ45 Auto MDI/MDIX	2	
P.O.E. Feature	-	P.O.E.Present at ETH2 Power Device (IEEE 802.3af): IEEE 802.3af compliant input interface Power consumption: 8Watts max. Over load & short circuit protection Isolation Voltage: 1000 VDC min. Isolation Resistance : 10 ⁸ ohms min
Serial Ports		
Connector	DB9 x 4	
Operation Mode	RS232 / RS422 / 4(2)-Wire RS485. Which can be configured by DS-Tool	
Serial Baud Rate	110 bps to 460.8 Kbps	
Data Bits	5, 6, 7, 8	
Parity	odd, even, none, mark, space	
Stop Bits	1, 1.5, 2	
RS-232	TxD, RxD, RTS, CTS, DTR, DSR, DCD, RI, GND	
RS-422	Tx+,Tx-, Rx+, Rx-,GND	
RS-485 (4-wire)	Tx+,Tx-, Rx+, Rx-,GND	
RS-485 (2-wire)	Data+, Data-,GND	
Flow Control	XON/XOFF, RTS/CTS, DTR/DSR	
LED indicators		
Power indicator	PWR 1(2) / Ready: Red On: Power is on and booting up. Red Blinking: Indicates an IP conflict, or DHCP or BOOTP server did not respond properly. Green On: Power is on and functioning Normally. Green Blinking: Located by Administrator.	
10/100TX RJ45 port indicator	Green for port Link/Act at 100Mbps. Yellow for port Link/Act at 10Mbps.	
Serial TX / RX LEDs:	Red: Serial port is receiving data Green: Serial port is transmitting data	

