

# IPS-3082GC

Industrial 10-port Managed POE Ethernet Switch with 8x10/100TX P.S.E and 2xGigabit combo port

3 ORing

## Highlights

- Supports **O-Ring** (recovery time < 10ms over 250 units of connection), Open-Ring, O-RSTP, RSTP/STP (IEEE 802.1w/D) for Ethernet Redundancy
- 8 port P.S.E fully compliant with IEEE802.3af standard, provide up to 15.4 Watts per port
- Supports SNMP v1/v2c/v3 & RMON & Port based/802.1Q VLAN Network Management
- Multiple notification for warning of excepted event
- Web-based ,Telnet, Console, CLI, and Windows utility (Open-Vision) configuration
- Support two Gigabit combo port
- Dual Redundant DC power inputs
- Auto IP checking alive of PD equipment
- Support LLDP Protocol



## Features

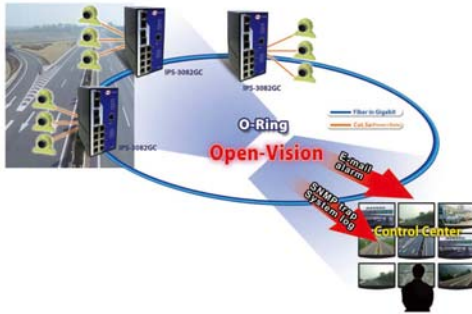
- World's fastest Redundant Ethernet Ring: O-Ring (recovery time < 10ms over 250 units of connection)
- Open-Ring support the other vendor's ring technology in open architecture
- O-RSTP support applications with complex topology
- 8 ports P.S.E fully compliant with IEEE802.3af standard, provide up to 15.4 Watts per port
- STP/RSTP/MSTP supported
- IGMP snooping for filtering multicast traffic
- Port Trunking for easy of bandwidth management
- SNMP v1/v2c/v3 support for secured network management
- RMON for traffic monitoring
- Event notification through Syslog, Email, SNMP trap, and Relay Output
- Port lock to prevent access from unauthorized MAC address
- Windows utility (Open-Vision) support centralized management and configurable by Web-based ,Telnet, Console, CLI
- Dual redundant DC power inputs of terminal block
- Support two Gigabit combo port
- Very wide operating temperature range from -40 to 70°C
- Rigid IP-30 housing design
- DIN-Rail and panel mounting enabled

## Introduction

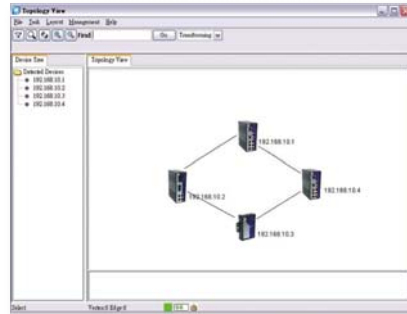
IPS-3082GC is managed Redundant Ring Ethernet switch with 8x10/100TX ports with POE (P.S.E) function & 2x1000 combo ports. With completely support of Ethernet Redundancy protocol, O-Ring (recovery time < 10ms over 250 units of connection), Open-Ring, O-RSTP and RSTP/STP (IEEE 802.1w/D) can protect your mission-critical applications from network interruptions or temporary malfunctions with its fast recovery technology. IPS-3082GC also support Power over Ethernet, a system to transmit electrical power, along with data, to remote devices over standard twisted-pair cable in an Ethernet network. Each IPS-3082GC switch has 8X10/100TX P.S.E (Power Sourcing Equipment) ports. P.S.E is a device (switch or hub for instance) that will provide power in a POE setup. All function of IPS-3082GC can be managed centralized and convenient by a powerful windows utility — Open-Vision. In addition, the wide operating temperature range from -40 to 70°C can satisfy most of operating environment. Therefore, the switch is one of the most reliable choice for highly-managed and Fiber Ethernet application with POE function.

## Open-Vision

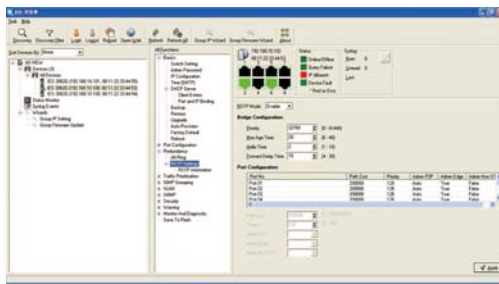
ORing's switches are intelligent switches. Different from other traditional redundant switches, ORing provides a set of Windows utility (**Open-Vision**) for user to manage and monitor all of industrial Ethernet switches on the industrial network.



Network connection

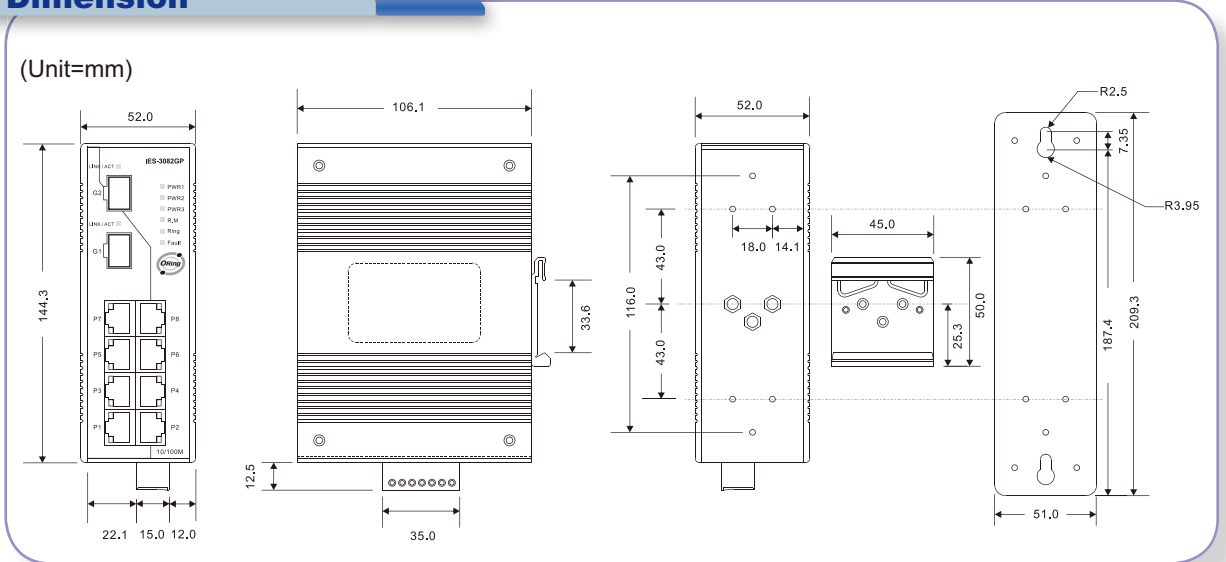


Topology View



Monitoring and Configuration interface

## Dimension



## Specifications

3 ORing

Industrial Ethernet Switches

ORing Switch Model	IPS-3082GC
<b>Physical Ports</b>	
10/100Base-T(X) Ports in RJ45 Auto MDI/MDIX with P.S.E	8
1000 combo in RJ-45 and SFP	2
<b>Technology</b>	
Ethernet Standards	IEEE 802.3 for 10BaseT, IEEE 802.3u for 100BaseT(X) and 100BaseFX, IEEE 802.3x for Flow control IEEE 802.3ad for LACP (Link Aggregation Control Protocol ) IEEE 802.1D for STP (Spanning Tree Protocol) IEEE 802.1p for COS (Class of Service) IEEE 802.1Q for VLAN Tagging IEEE 802.1w for RSTP (Rapid Spanning Tree Protocol) IEEE 802.1x for Authentication IEEE 802.1AB for LLDP (Link Layer Discovery Protocol) IEEE 802.3af P.o.E specification (up to 15.4 Watts per port for P.S.E)
MAC Table	8192 MAC addresses
Priority Queues	4
Processing	Store-and-Forward
Switch Properties	Switching latency: 7 us Switching bandwidth: 5.6Gbps Max. Number of Available VLANs: 4096 IGMP multicast groups: 1024 Port rate limiting: User Define
Security Feature	Enable/disable ports, MAC based port security Port based network access control (802.1x) VLAN (802.1Q ) to segregate and secure network traffic Radius centralized password management SNMPv3 encrypted authentication and access security
Software Features	STP/RSTP (IEEE 802.1D/w) Redundant Ring (O-Ring) with recovery time less than 10ms over 250 units TOS/Diffserv supported Quality of Service (802.1p) for real-time traffic VLAN (802.1Q) with VLAN tagging and GVRP supported IGMP Snooping for multicast filtering Port configuration, status, statistics, monitoring, security
Network Redundancy	O-Ring Open-Ring O-RSTP STP RSTP MSTP
RS-232 Serial Console Port	RS-232 in RJ45 connector with console cable. 9600bps, 8, N, 1
<b>LED indicators</b>	
Power indicator	Green : Power LED x 3
R.M. indicator	Green : indicate system operated in O-Ring mode
Fault indicator	Yellow : Indicate excepted event occurred
10/100TX RJ45 port indicator	Green for port Link/Act. Yellow for Duplex/Collision
1000X / Fiber port indicator	Green for port Link/Act. Yellow for Link
<b>Fault contact</b>	
Relay	Relay output to carry capacity of 1A at 24VDC

Power	
Redundant Input power	Dual DC inputs. 48VDC on 6-pin terminal block
Power consumption (Typ.)	9 Watts
Overload current protection	Present
Reverse polarity protection	Present on terminal block
Physical Characteristic	
Enclosure	IP-30
Dimension (W x D x H)	72(W)x106(D)x152(H) mm ( 2.83 x 4.17 x 5.98 inch.)
Weight (g)	1100 g
Environmental	
Storage Temperature	-40 to 85°C (-40 to 185°F)
Operating Temperature	-40 to 70°C (-40 to 158°F)
Operating Humidity	5% to 95% Non-condensing
Regulatory approvals	
EMI	FCC Part 15, CISPR (EN55022) class A
EMS	EN61000-4-2 (ESD), EN61000-4-3 (RS), EN61000-4-4 (EFT), EN61000-4-5 (Surge), EN61000-4-6 (CS), EN61000-4-8, EN61000-4-11
Shock	IEC60068-2-27
Free Fall	IEC60068-2-32
Vibration	IEC60068-2-6
Safety	EN60950
Warranty	5 years

### Ordering Information

IPS-3 **AA** **B** **CC**

Code Definition	10/100TX Port Number	Additional Port Number	Additional Port Type
Option	- 08: 8 ports	- 2: 2 ports	- GC: 1000 combo with SFP

Available Model	Model Name	Description
	IPS-3082GC	Industrial 10-port Managed POE Ethernet Switch with 8x10/100TX P.S.E + 2xGigabit combo ports