



Quick Installation Guide

IES-3162GC

Industrial Managed Ethernet Switch

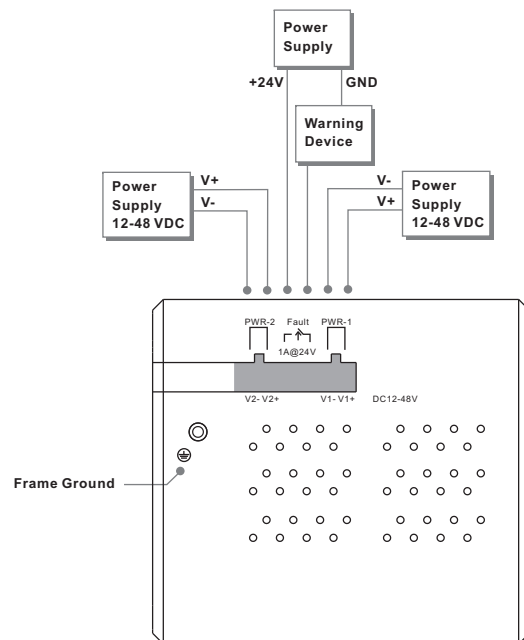
Introduction

IES-3162GC is managed Redundant Ring Ethernet switch with 16x10/100Base-T(X) ports and 2xgigabit combo ports. With completely support of Ethernet Redundancy protocol, O-Ring recovery time < 10ms over 250 units of connection), Open-Ring, O-RSTP and MSTP/RSTP/STP (IEEE 802.1s/w/D) can protect your mission-critical applications from network interruptions or temporary malfunctions with its fast recovery technology. All function of **IES-3162GC** can be managed centralized and convenient by a powerful windows utility: Open-Vision. In addition, the wide operating temperature range from -40 to 70°C can satisfy most of operating environment. Therefore, the switch is one of the most reliable choice for highly-managed and Fiber Ethernet application.

Features

- > World's fastest Redundant Ethernet Ring: O-Ring (recovery time < 10ms over 250 units of connection)
- > Open-Ring support the other vendor's ring technology in open architecture
- > O-RSTP support applications with complex topology
- > STP/RSTP/MSTP supported
- > Support PTP Client (Precision Time Protocol) clock synchronization
- > IGMP v2/v3 (IGMP snooping for support) filtering multicast traffic
- > Port Trunking for easy of bandwidth management
- > SNMP V1/V2c/V3 support for secured network management
- > RMON for traffic monitoring
- > Support LLDP protocol
- > Event notification through Syslog, Email, SNMP trap, and Relay Output
- > Port lock to prevent access from unauthorized MAC address
- > Windows utility (Open-Vision) support centralized management and configurable by Web-based ,Telnet, Console, CLI
- > Support two Gigabit combo ports
- > Rigid IP-30 housing design
- > DIN-Rail and wall mounting enabled

Power Connection Guide



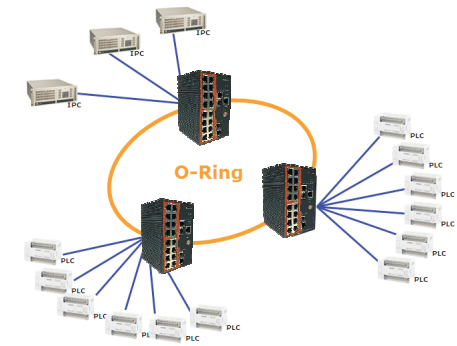
Specifications

ORing Switch Model	IES-3162GC
Physical Ports	
10/100 Base-T(X) Ports in RJ45 Auto MDI/MDIX	16
Gigabit combo Port in RJ-45 and SFP	2
Technology	
Ethernet Standards	IEEE 802.3 for 10Base-T, IEEE 802.3u for 100Base-T(X) and 100Base-FX, IEEE 802.3z for 1000Base-X, IEEE 802.3ab for 1000Base-T, IEEE 802.3ad for LACP (Link Aggregation Control Protocol), IEEE 802.3x for Flow control, IEEE 802.1D for STP (Spanning Tree Protocol), IEEE 802.1p for COS (Class of service), IEEE 802.1Q for VLAN Tagging, IEEE 802.1w for RSTP (Rapid Spanning Tree Protocol), IEEE 802.1s for MSTP (Rapid Spanning Tree Protocol), IEEE 802.1x for Authentication, IEEE 802.1AB for LLDP (Link Layer Discovery Protocol)
MAC Table	8192 MAC addresses
Priority Queues	4
Processing	Store-and-Forward
Switch Properties	Switch latency: 9 us Switch bandwidth: 7.2Gbps Max. Number of Available VLANs: 4096 IGMP multicast groups: 1024 Port rate limiting: User Define
Security Features	Enable/disable ports, MAC based port security Port based network access control (802.1x) VLAN (802.1q) to segregate and secure network traffic Radius centralized password management SNMPv3 encrypted authentication and access security
Software Features	STP/RSTP/MSTP (IEEE 802.1D/w/s) Redundant Ring (O-Ring) with recovery time less than 10ms over 250 units PTP Client (Precision Time Protocol) clock synchronizing function TOS/Diffserv supported Quality of Service (802.1p) for real-time traffic VLAN (802.1Q) with VLAN tagging and GVRP supported IGMP Snooping for multicast filtering Port configuration, status, statistics, monitoring, security
Network Redundancy	O-Ring, Open-Ring, O-RSTP, STP, RSTP, MSTP
RS-232 Serial Console Port	RS-232in RJ45 connector with console cable. Baud rate setting: 9600bps, 8, N, 1
LED Indicators	
Power Indicator	Green: Power LED x3
R.M. Indicator	Green: Flashing to indicate system operated in O-Ring Master mode
O-Ring indicator	Green: Indicate system operated in O-Ring mode
Fault Indicator	Amber: Indicate unexpected event occurred
10/100 Base-T(X) RJ45 Port Indicator	Green for port Link/Act. Amber for Duplex/Collision
10/100/1000Base-T(X) RJ45 Port Indicator	Green for port Link/Act. Amber for 100Mbps indicator
100/1000Base-X/Fiber Port Indicator	Green for port Link/Act.
Fault contact	
Relay	Relay output to carry capacity of 1A at 24 VDC
Power	
Redundant Input power	Dual DC input 12-48VDC on 6-pin terminal block
Power consumption(Typ.)	12 Watts
Overload current protection	Present
Reverse polarity protection	Present on terminal block
Physical Characteristic	
Enclosure	IP-30
Dimension (W x D x H)	96.4(W)x108.5(D)x154(H) mm (3.8x4.27x6.06 inch.)
Weight (g)	1070 g
Environmental	
Storage Temperature	-40 to 85°C (-40 to 185°F)
Operating Temperature	-40 to 70°C (-40 to 158°F)
Operating Humidity	5% to 95% Non-condensing
Regulatory approvals	
EMI	FCC Part 15, CISPR (EN55022) class A
EMS	EN61000-4-2 (ESD), EN61000-4-3 (RS), EN61000-4-4 (EFT), EN61000-4-5 (Surge), EN61000-4-6 (CS), EN61000-4-8, EN61000-4-11
Shock	IEC60068-2-27
Free Fall	IEC60068-2-32
Vibration	IEC60068-2-6
Safety	EN60950-1
Warranty	5 years

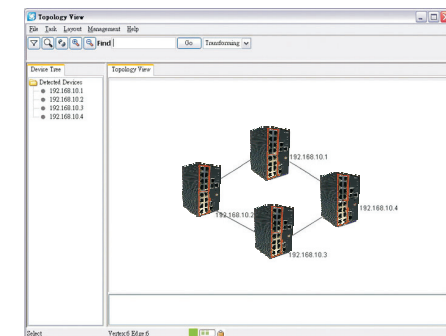
Open-Vision

ORing's switches are intelligent switches. Different from other traditional redundant switches, ORing provides a set of Windows utility (Open-Vision) for user to manage and monitor all of industrial Ethernet switches on the industrial network.

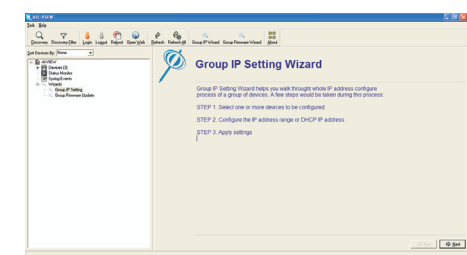
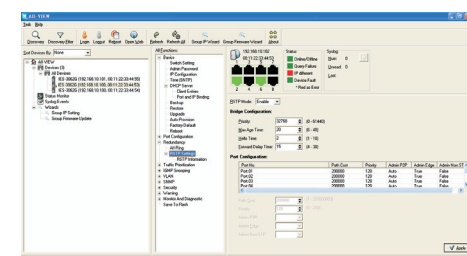
Network connection



Topology View



Monitoring and Configuration interface





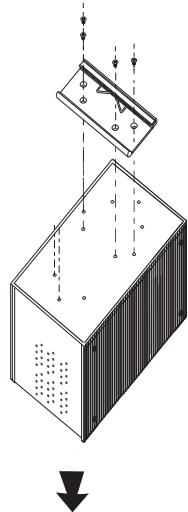
Quick Installation Guide

IES-3162GC

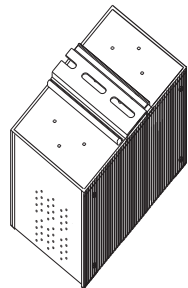
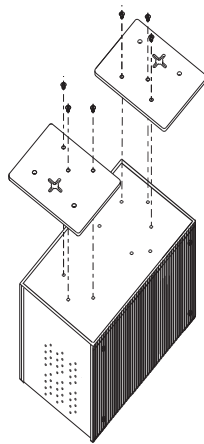
Industrial Managed Ethernet Switch

Installation

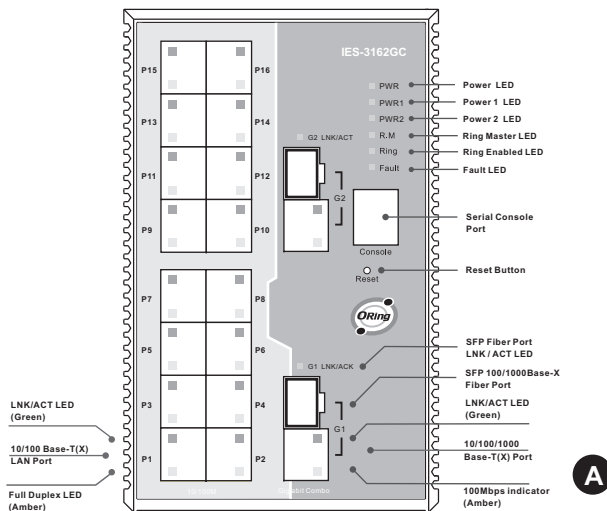
DIN-Rail Install Step



Wall-mounted Install Step



Front Panel



Accessory

① 6-Pin Terminal block



② Dust Cover (RJ-45)



③ Dust Cover (SFP)



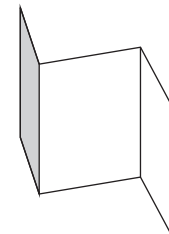
④ Flat Screw (M3 X5)



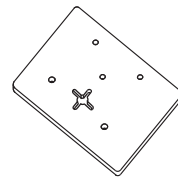
⑤ CD



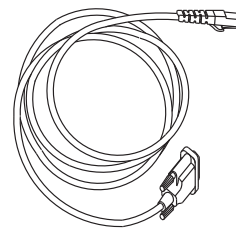
⑥ QIG



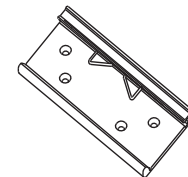
⑦ Wall-mounted kit



⑧ Console Cable



⑨ 88mm DIN-Rail kit



Packing list

Model name	Front Panel	Model Description	Accessory
IES-3162GC	A	Industrial 18-port managed Ethernet switch with 16x10/100Base-T(X) and 2xGigabit combo ports, SFP socket	① X1, ② X18, ③ X2, ④ X6, ⑤ X1, ⑥ X1, ⑦ X2, ⑧ X1, ⑨ X1

ORing Industrial Networking Corp.
 Copyright © 2010 ORing. All rights reserved.
 TEL: +886-2-2918-3036 Website: www.oring-networking.com
 FAX: +886-2-2918-3084 E-mail: support@oring-networking.com

Communication Connections

10/100Base-T(X) Ethernet Port Connection

RJ45 (8-pin, MDI) Port Pinouts

Pin	Single
1	Tx+
2	Tx-
3	Rx+
6	Rx-

RJ45 (8-pin, MDI-X) Port Pinouts

Pin	Single
1	Rx+
2	Rx-
3	Tx+
6	Tx-

1000Base-T Ethernet Port Connection

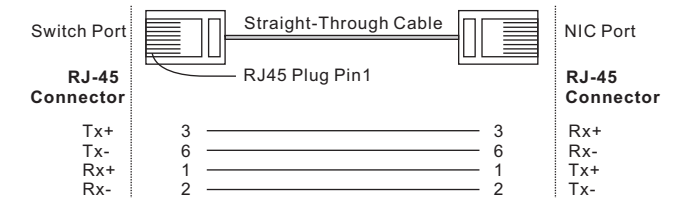
RJ45 (8-pin, MDI) Port Pinouts

Pin	MDI
1	BI_DA+
2	BI_DA-
3	BI_DB+
4	BI_DC+
5	BI_DC-
6	BI_DB-
7	BI_DD+
8	BI_DD-

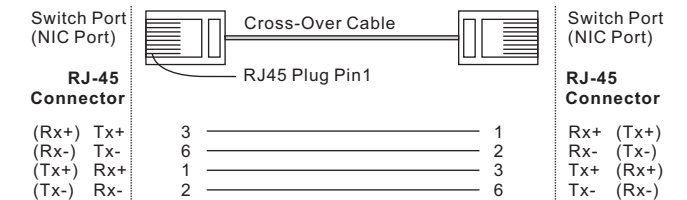
RJ45 (8-pin, MDI-X) Port Pinouts

Pin	MDI-X
1	BI_DB+
2	BI_DB-
3	BI_DA+
4	BI_DD+
5	BI_DD-
6	BI_DA-
7	BI_DC+
8	BI_DC-

RJ45 (8-pin) to RJ45 (8-Pin) Straight-Through Cable Wiring



RJ45 (8-pin) to RJ45 (8-Pin) Cross-Over Cable Wiring



100/1000Base-X SFP Port Connection

